

technical rider
wpZimmer STUDIO

stage

total size (incl. space taken up by the audience stands) approx.: 18m deep x 17m wide
 size of performing area (covered by black or white marley floor) 12m90 deep x 16m50 wide
 height of roof approx.: 6m20
 height of lighting bars: 5m
 clearance underneath roof structure (maximum height of set) 4m50

floor

sprung brown wooden floor, not chipping (varnished multiplex)
 black or white vinyl dance marley, max. dimensions 12m90 x 16m50

masking

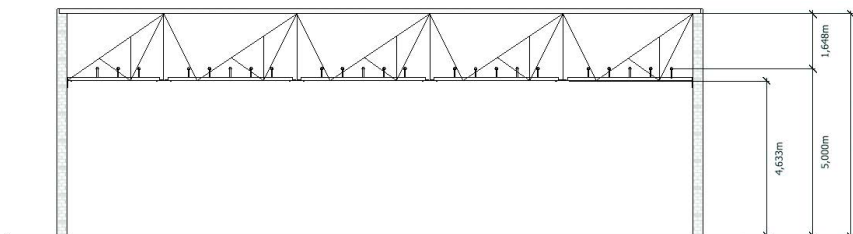
we do not have any decent black curtains!
 the walls of our stage consist of sandblasted red brick, there are 4 heating devices (neutral looking) placed near the walls

power

there are several 16 amp wall sockets (Belgian standard round 2 pin + ground pin) on the left & right wall and 1 beneath the floor
 max. power use for the entire building is approx. 55kW (80A three phase 400V), this includes dimmers, spotlights, audio equipment and any other electrical equipment or appliance connected.

lights

general work lights: fluorescent tubes fixed to the ceiling of the stage, operated by a light switch next to the entrance door
 Spotlights can be hung from the fixed lighting bars above the entire stage.



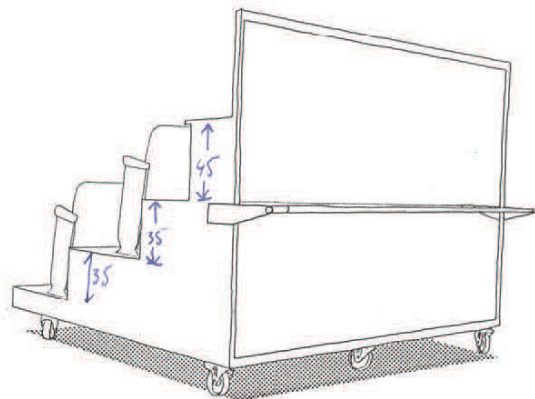
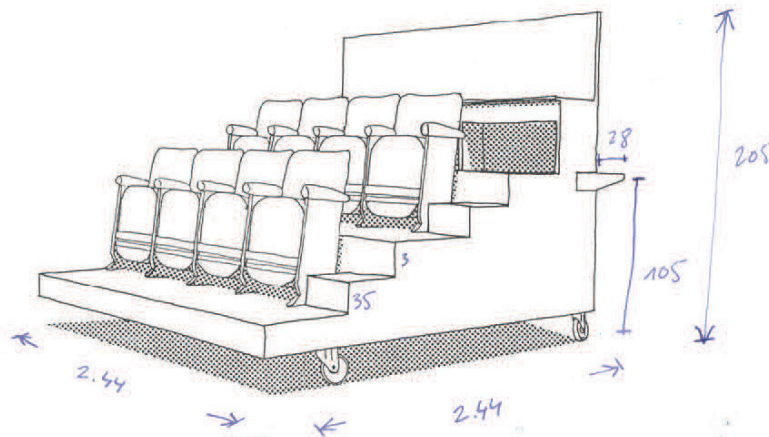
audience stands

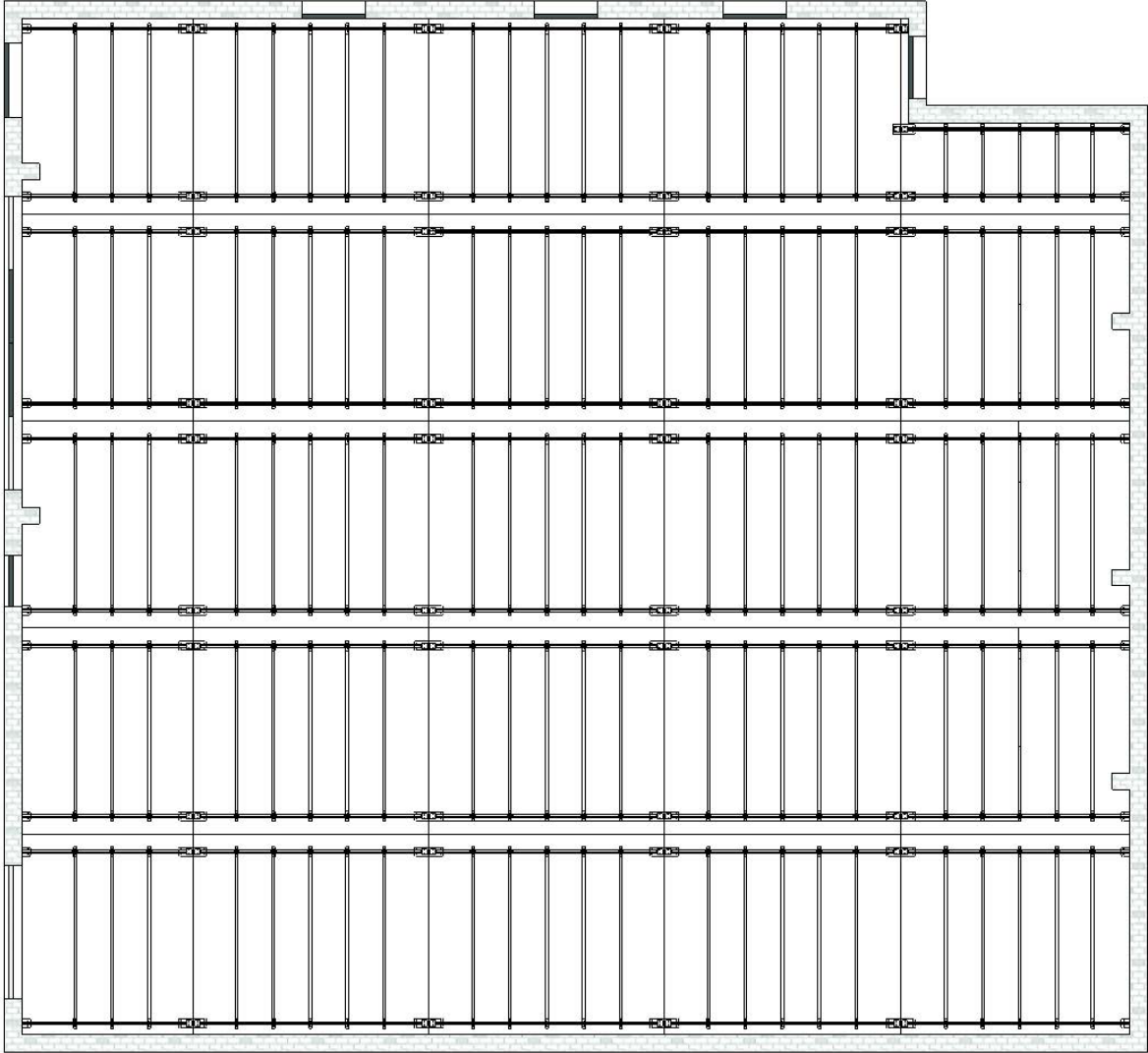
There are 6 mobile audience stand-units in the stage, these cannot be moved out, but can be placed anywhere on stage (emergency exits need to be kept open)

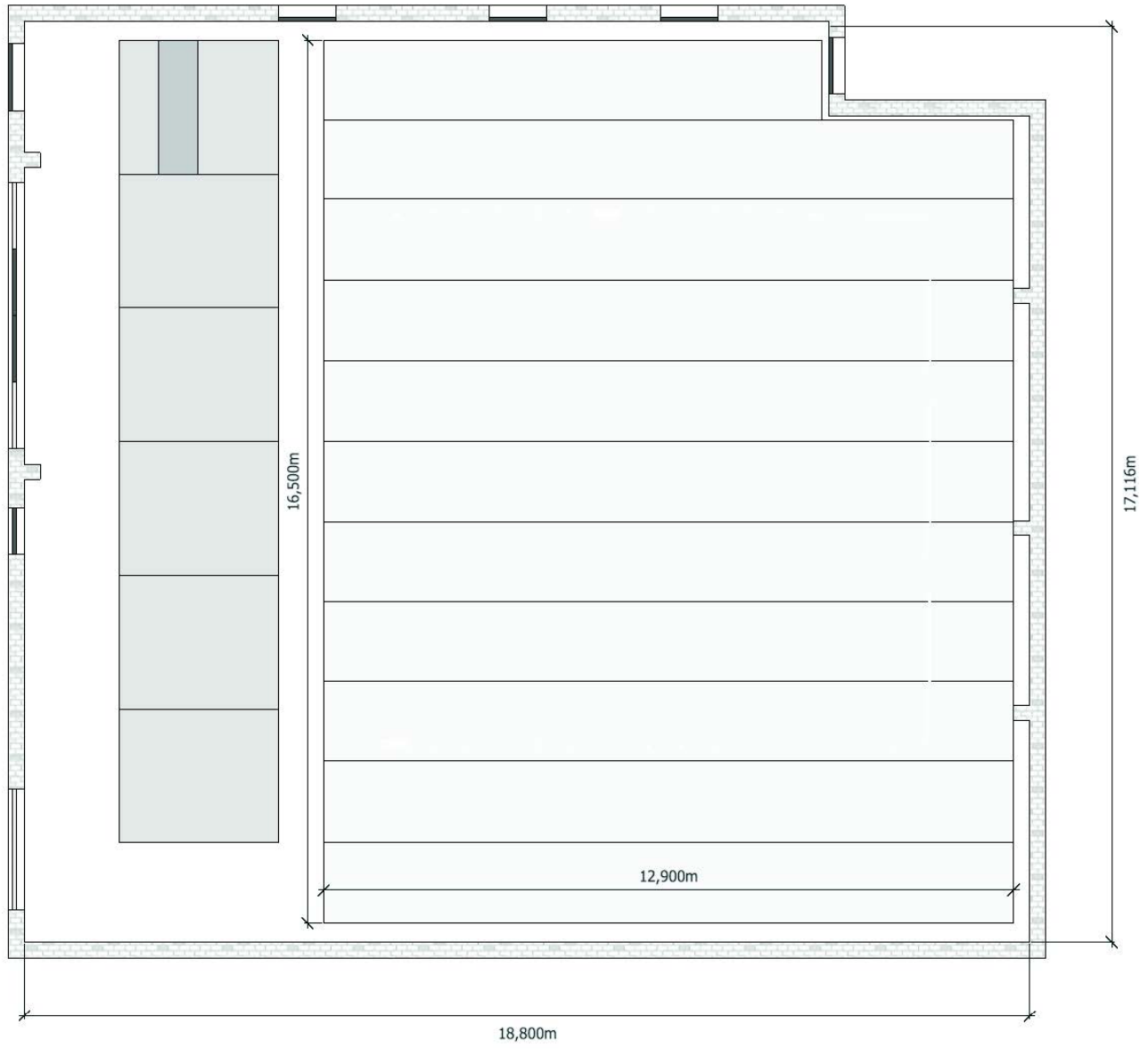
Each unit has a capacity of 13 people, except 1 unit where the tech table is, that one can seat 4 people. There's a mirror and a ballet-bar for rehearsals on the back of 4 units

Maximum seating capacity = 69

Dimension of units approx.: 2m80 deep x 2m50 wide







equipment

speakers & amps

- 4x electro-voice ETX-10P two-way powered loudspeaker (can be flown, mounted on pole above sub or on tripod, or used as monitor wedge)
- 2x electro-voice ETX-15SP active sub-bass
- 2x mounting pole (can be fixed between sub and top)

mixers

- 1x behringer X32 compact mixer
- 1x alesis multimix 8 usb FX mixer

microphones

- 1x Shure SM58
- 2x Sennheiser MD427
- 2x AKG C1000S
- 1x AKG D310
- 1x Calrec CM1051C
- 2x Bandridge cheap SM58 clone

microphone stands

- 3x black tripod stand with boom arm
- 2x silver round base stand
- 3x black round base stand
- 2x round base table stand
- 2x triangular base table stand with gooseneck

various

- 2x Behringer DI20 stereo DI box

